

CL32J-BK

8 x 4" Passive Column Array

FEATURES

- 8 x 4" mid-frequency drivers, 24 x 0.75" high-frequency drivers.
- 130dB Max SPL (Peak).
- Frequency Response of 70Hz - 20kHz(± 3 dB).
- 100° (H) x 35° (V) dispersion angle.
- Asymmetrical vertical projection.
- Robust wooden enclosure with a wear-resistant finish.
- Mounting bracket included.

APPLICATIONS

- Houses of Worship
- Museums
- Public Transport Stations
- Conference Spaces
- Lecture Halls
- Live Sound Reinforcement



DESCRIPTION

The CL32J is an elegant 2-way passive column array speaker system that comprises 8 x 4-inch mid-frequency drivers alongside 24 x 0.75-inch high-frequency drivers with a maximum SPL of 127dB (peak).

The C32J has a horizontal dispersion angle of 100° (-6dB), and a vertical coverage angle of 35° (-6dB). The CL16J uses asymmetrical vertical projection (+10°/-25°) reducing the requirement for tilting the speaker on installation and optimising the coverage angle when installed at a static height. This helps to simplify and speed up the installation process.

Mounting options include 2 x M8 mounting points for the included CL32J-FLB bracket. The rear panel offers input connection via Euroblock.

The wooden enclosure is composed of birch and finished in a scratch/wear-resistant paint, with a perforated hexagonal mesh steel grille with acoustic foam backing. Available in black or white.

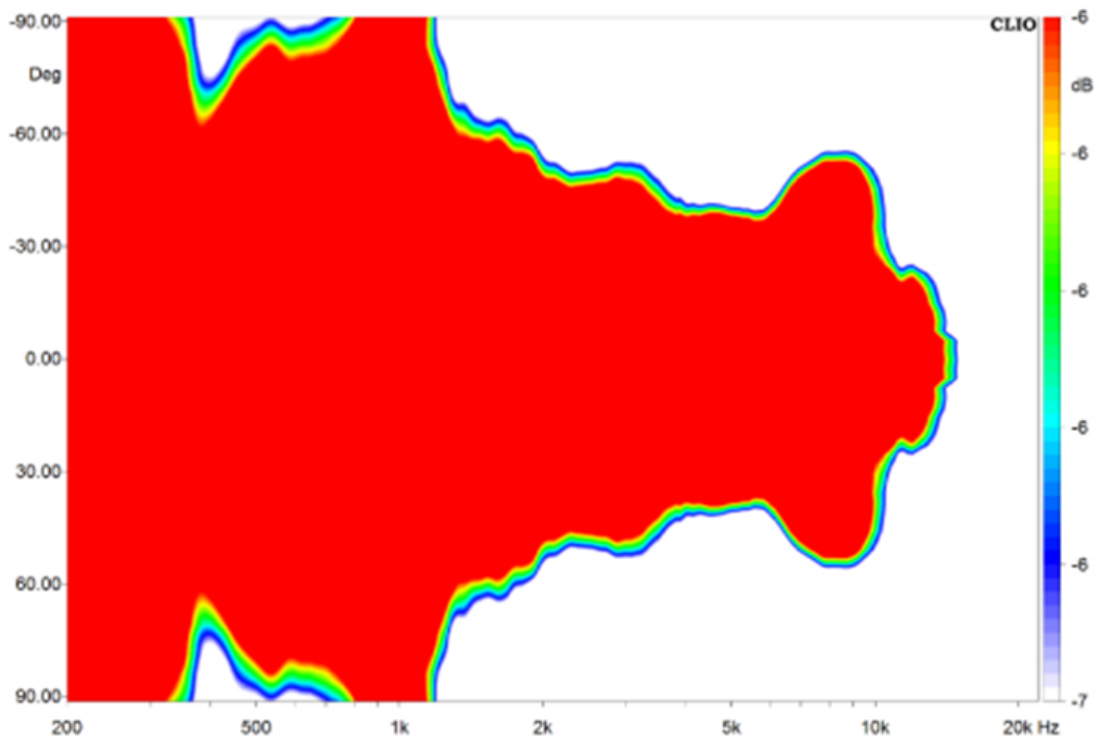


Specifications

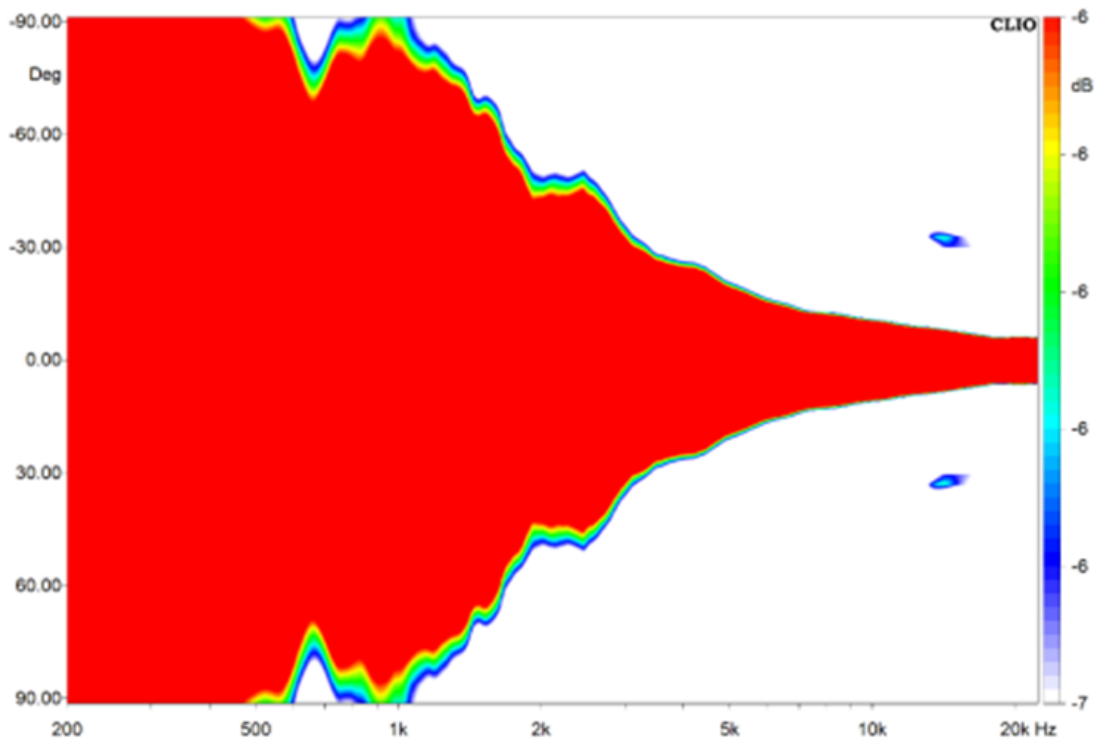
Specifications	
Model	CL32J
System type	Column Array PA System
Frequency Response	70Hz - 20kHz (± 3 dB)
	53Hz - 23kHz (-10dB)
Horizontal Coverage Angle	100°(-6dB)
Vertical Coverage Angle	35° (-6dB), +10°/-25° (-7.5° offset)
Power Rating	400W RMS, 800W Program, 1600W Peak
Maximum SPL	127dB Continuous, 130dB Peak
Sensitivity	101dB
Nominal Impedance	4 Ω
Speaker	
MF Driver	8 x 4" mid-frequency driver
HF Driver	24 x 0.75" high-frequency driver
Drive mode	Two-way PASSIVE
Enclosure	
Cabinet	Birch
Finish	Scratch-resistant and wear-resistant paint finish (White or Black option)
Grille	Hexagonal mesh perforated steel with acoustic foam backing.
Fittings	Connection parts, Threaded pole-mount socket, Mounting points
Mounting Bracket	2 x M8 mounting points for standard CL32J-FLB
Connect	
Connectors	Removable locking connector with screw terminals
Pin Connections (Input)	+/-
Dimensions (H/W/D)	903 x 140 x 185mm



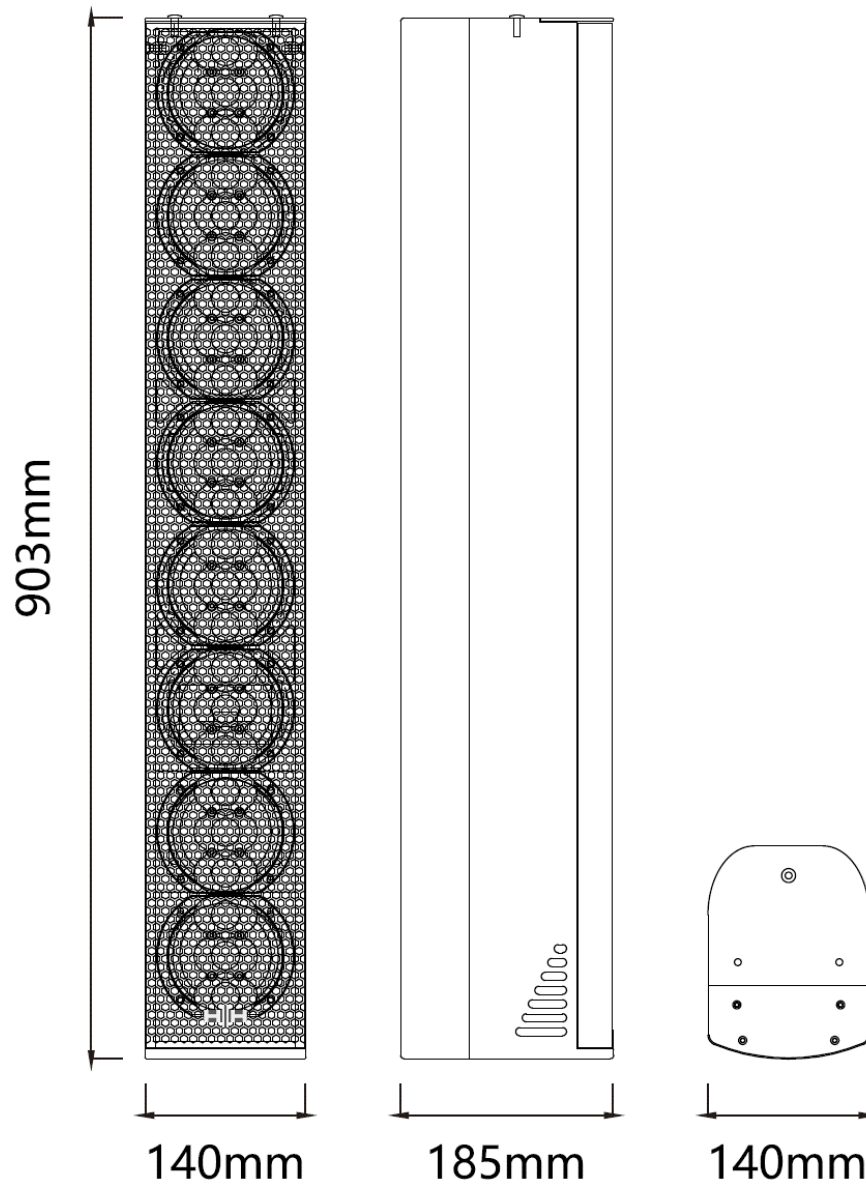
Horizontal Dispersion



Vertical Dispersion



DIMENSIONS



HH Electronics is a trading style of
Headstock Distribution Ltd,
Steelpark Road, Coombswood Business Park West,
Halesowen, West Midlands, B62 8HD, UK.
© 2024 HH Electronics Ltd
www.hhaudio.com

In the interest of continued development, HH reserves the right to amend
product specification without prior notification.

