

TNi-BRK30 - WALL MOUNTING BRACKET

WWW.HHELECTRONICS.COM

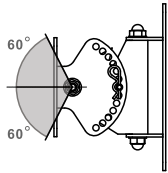


T E S S E N

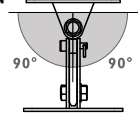
INSTALL

Thank you for purchasing the TNi-BRK30 wall mounting bracket accessory kit for use with the TNi Range. With a 30Kg load limit and two colour options this discrete mounting system will provide both horizontal and vertical rotation or a combination of the two.

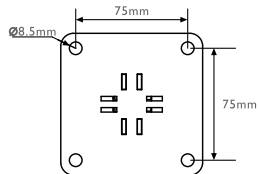
TILT



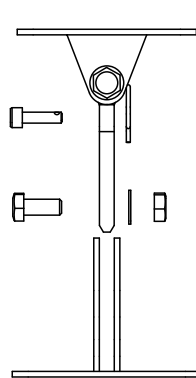
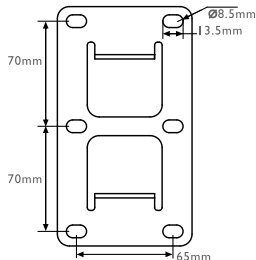
ROTATION



SPEAKER PLATE - FIXING CENTRES

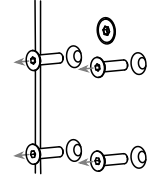


WALL PLATE - FIXING CENTRES

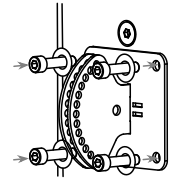


A: For ease of installation, dismantle the bracket allowing for the wall bracket and speaker plate to be installed individually.

B: Remove the four travel bolts from the rear of the cabinet (with a 5mm hex driver) and store for future use.



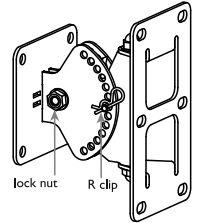
C: Fit the speaker plate with the four M8 X35mm cap head screws and washers supplied.



D: Fit the wall plate with suitable fixings. It is recommended that the six available fixing holes are used.

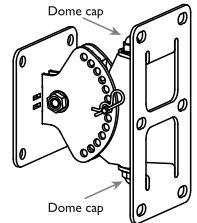
E: Join the two halves of the bracket and loosely secure with the lock nut/bolt.

Set the desired tilt, tighten the lock nut and secure with the R-clip.



F: To set the rotation, remove the protective dome caps and slightly loosen the nut.

Once correctly adjusted, make sure the nut and bolt are tight and replace the dome caps.



SAFETY: For additional safety, a safety strap should be fitted between the safety harness point on the cabinet and the wall (point of installation) using suitable fixings. See the respective TNi cabinet user manual for more information.

The wall mounting of cabinets should be performed only by properly qualified persons, in compliance with all local laws and using approved hardware - it is the responsibility of the installer to ensure all requirements / laws have been met and adhered to.

It is the installers' responsibility to ensure the point of fixing is structurally adequate to support the weight of the cabinet.

For added safety, it is strongly recommended that the audio connections, mechanical fixing and mounting bracket are checked periodically.



Designed and Engineered in the UK since 1968

© 2018 HH Electronics Ltd