

MP42

4 x 5" 2-Way Line Array Loudspeaker

FEATURES

- 4 x 5" low-frequency drivers, 2 x 2" high-frequency drivers.
- 131dB Max SPL (Peak).
- Frequency Response of 88Hz - 20kHz (± 3 dB).
- 100° (H) x 10° (V) dispersion angle.
- Integrated pin based rigging system for linking and splaying.
- Lightweight compact design.

APPLICATIONS

- Portable live sound reinforcement.
- Small live music venues
- Clubs
- Theatres
- Houses of Worship
- Corporate Events
- Small Concerts and Touring

DESCRIPTION

The MP42 2-way line array loudspeaker comprises 4 x 5" low-frequency drivers and 2 x 1.75" high-frequency compression drivers with a maximum SPL of 131dB (peak).

The MP42 has a horizontal coverage angle of 100° and a vertical coverage angle of 10°. The ultra-lightweight design and integrated pin-based rigging system make set up and tear down simple with the ability to link effortlessly and splay enclosures in a ground-stacked or flown configuration. Pin slots allow for splay angles from 0° to 10° to suit a multitude of applications.

The MP42 features a robust all-wood construction with a hard-wearing black paint finish. The hexagonal mesh grille is composed of black perforated steel with an acoustic foam backing.

Designed to pair seamlessly with the MP2P subwoofer enclosure.

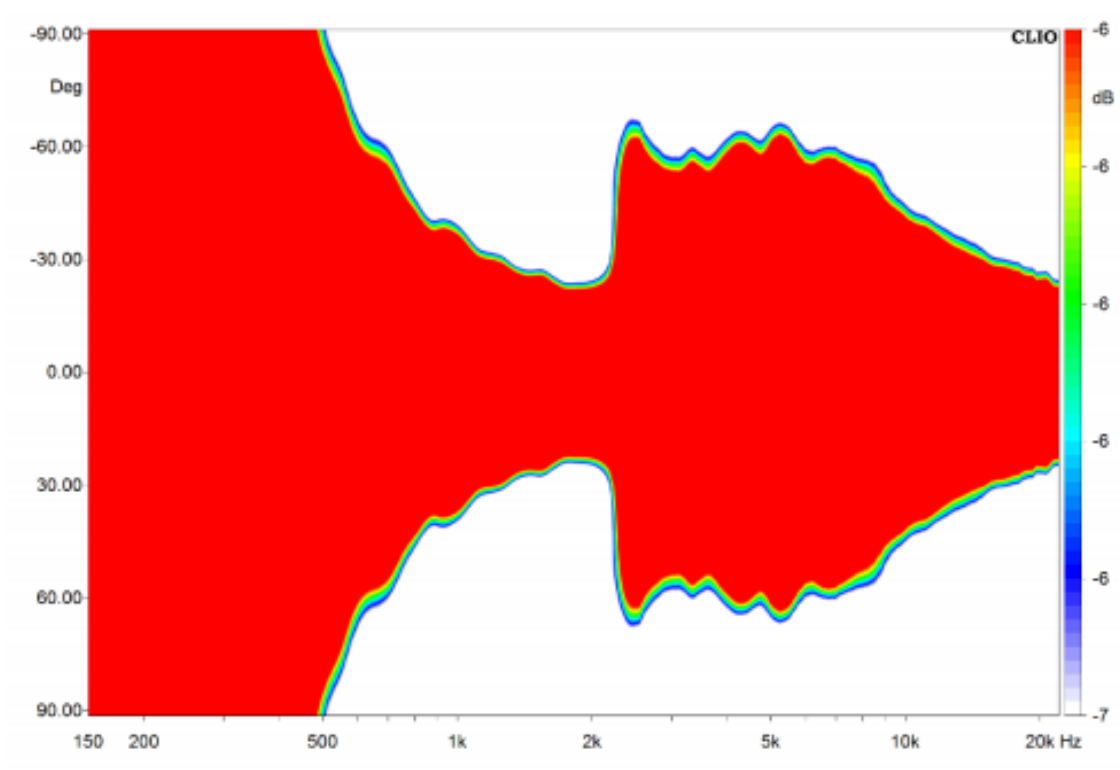


Specifications

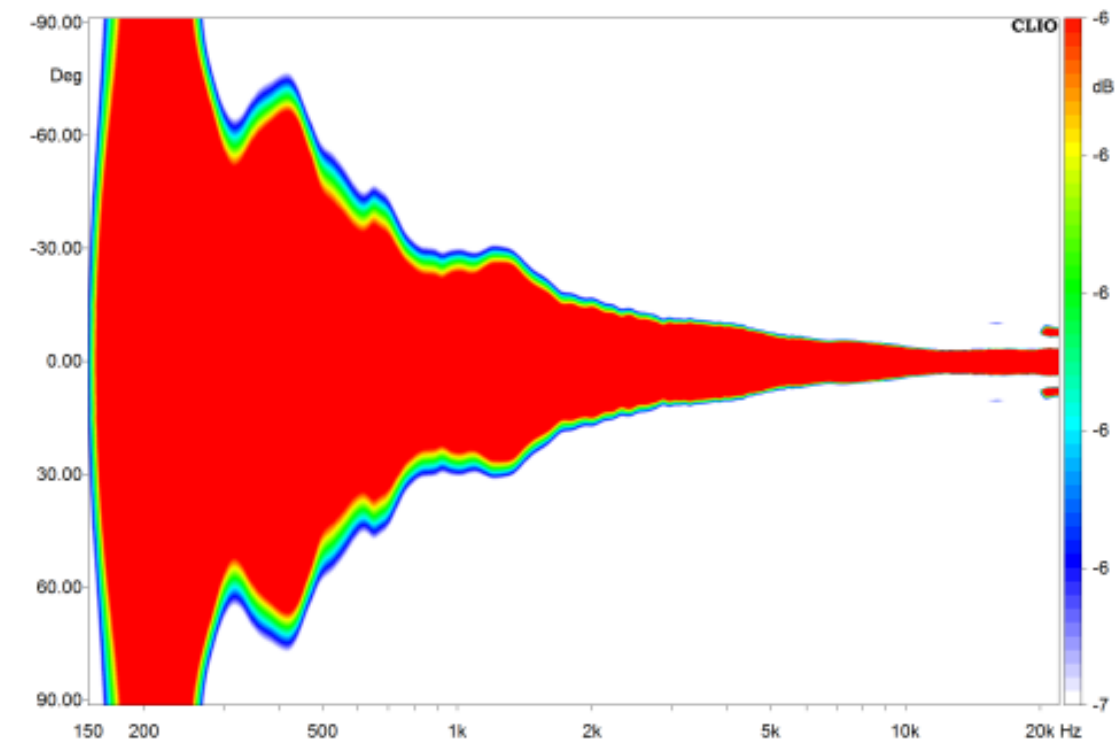
Specifications	
Model	MP42
System type	2-way Line Array Loudspeaker
Frequency Response	88Hz - 20kHz(±3dB)
	60Hz - 20kHz(-10dB)
Horizontal Coverage Angle	100°
Vertical Coverage Angle	10°
Power Rating	320W Continuous, 1280W Peak
Maximum SPL	125dB Continuous, 131dB Peak
Sensitivity	100dB(1W@1m)
Nominal Impedance	8 Ohms
Speaker	
LF Driver	4 x 5" low-frequency driver
HF Driver	2 x 1.75" high-frequency compression driver
Drive mode	Two-way PASSIVE
Enclosure	
Cabinet	Robust all-wood construction
Finish	Hard-wearing black paint
Grille	Hexagonal mesh perforated steel with acoustic foam backing.
Fittings	2 x Rear handles, rigging system, provision for pole-mount socket.
Mounting Points	M6 side mounting for integrated brackets
Mounting Bracket	MINI POWER-FLB for suspended mounting
Rigging	4-point rigging system, splay angle adjustments from 0° to 10°
Connect	
Connectors	2 x speakON NL4
Pin Connections (Input)	1+/-
Pin Connections (Link)	1+/- and 2+/-
Dimensions (H/W/D)	300 x 350 x 245mm
Weight	12kg



Horizontal Dispersion



Vertical Dispersion



DIMENSIONS

