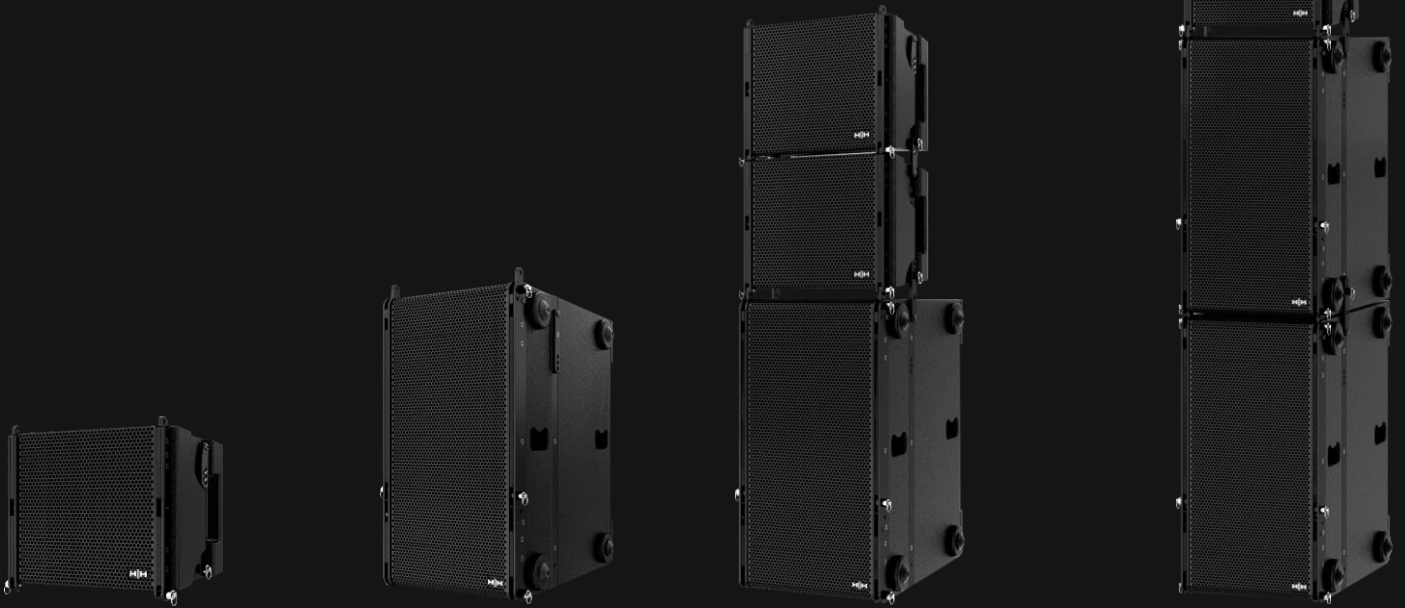




MTP

MINI POWER



USER MANUAL



CONTENTS

OVERVIEW	2
APPLICATIONS	2
INSTALLATION GUIDE	3
MOUNTING & SUSPENSION	3
Example 1: MP42 Standalone Mounting	4
Example 2: Hanging the MP42 with the MP2A/MP2P	5
GROUND STACKING:.....	6
Example 1: 4 MP42s and 2 MP2A/MP2Ps for floor-mounted use.	7
Example 2: Two MP42s and one MP2A/MP2P combined for floor-standing use.	8
USER GUIDE.....	9
MP42 / MP2P REAR PANEL	9
INPUT	9
LINK.....	9
MP2A REAR PANEL.....	10
POWER	10
SYSTEM CONFIGURATION & MODE SELECTION:	11
AVAILABLE MODE CONFIGURATIONS:	11
PRESET MODES:	11
SPECIFICATIONS	12
MP42.....	12
MP2P	13
MP2A	14
DIMENSIONS.....	15
MP42.....	15
MP2P / MP2A	15
SAFETY AND WARNINGS.....	16



OVERVIEW

The MP Series compact line array is the perfect solution for small-scale touring and fixed installation applications. Designed to deliver high SPL sound in a portable and simple-to-set-up format. The MP Series consists of three models: MP42 4 x 5" 2-way passive line array loudspeaker, MP2P 2 x 12" passive subwoofer and MP2A 2 x 12" active subwoofer.

The integrated rigging system makes setup and teardown effortless, with the ability to link to MP2P/A and MP42 units, making this an excellent solution for touring applications. The MP2P also provides a mounting option for MP42 units via an integrated pole-mount socket, further expanding the possible configurations and applications.

The MP42 and MP2P, or MP2A, pair together seamlessly using either the integrated rigging system or the pole mount socket, making the MP Series a versatile solution for a wider range of use cases than a traditional line array system.

The MP42 is a high-performance, compact line array system engineered for versatility and precision. It incorporates four 5-inch low-frequency drivers, leveraging symmetrical phase alignment technology to optimise inter-driver coupling—resulting in enhanced system efficiency, improved coherence, and increased reliability. High-frequency reproduction is handled by two 1.75-inch magnesium alloy diaphragm compression drivers with full neodymium structures. These drivers offer outstanding conversion efficiency, fast transient response, and exceptional detail resolution. Integrated HH phase plug technology ensures accurate and consistent directional control across the frequency spectrum.

The MP2P passive subwoofer comprises two 12" low-frequency woofers providing a maximum SPL of 137dB SPL Peak and a frequency response as low as 38Hz. The acoustically optimised cabinet is constructed of plywood with extensive internal bracing to eliminate vibrational modes. The grille is a hexagonal perforated steel mesh with an acoustic foam backing.

The MP2A is an active low-frequency speaker with a built-in high-performance digital amplifier module, ensuring deep and powerful low-frequency response. It perfectly complements the MP42, delivering exceptional sound quality. Its compact design makes installation easy, making it suitable for both fixed installations and portable performances.

When combined with the MP2P or MP2A dual 12-inch subwoofer, the system can deliver a maximum peak SPL of 137 dB, all within a remarkably compact form factor. This delivers excellent performance with minimal processing, easily meeting the sound reinforcement needs of various environments.

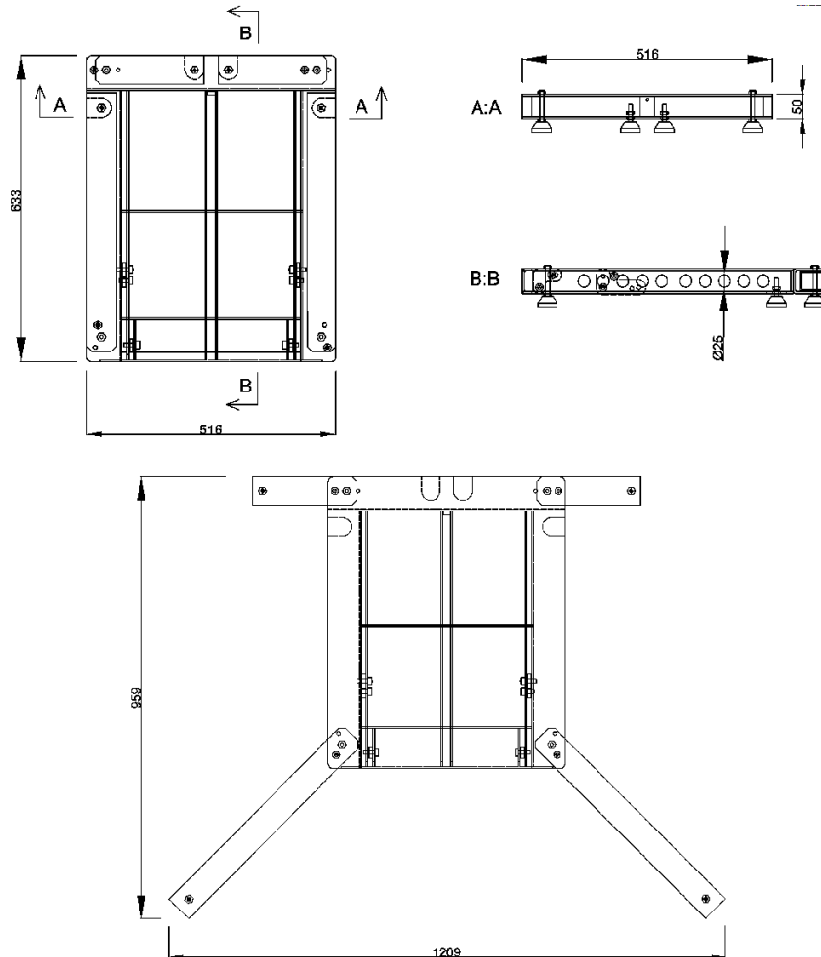
APPLICATIONS

- Portable sound reinforcement
- Small-scale tours and concerts
- Theatres and Opera Houses
- Medium-sized houses of worship
- Small clubs and live music venues
- Corporate audiovisual events
- Boardrooms and media presentations
- Mid-sized conference centres
- Trade shows and exhibitions

INSTALLATION GUIDE

MOUNTING & SUSPENSION

The MINI POWER-FLB bracket supports flexible installation of the MP42 and MP2P/A enclosures, allowing both suspended and base-mounted configurations. It supports both vertical and angled orientations, depending on the application. It includes extendable legs to aid stability.



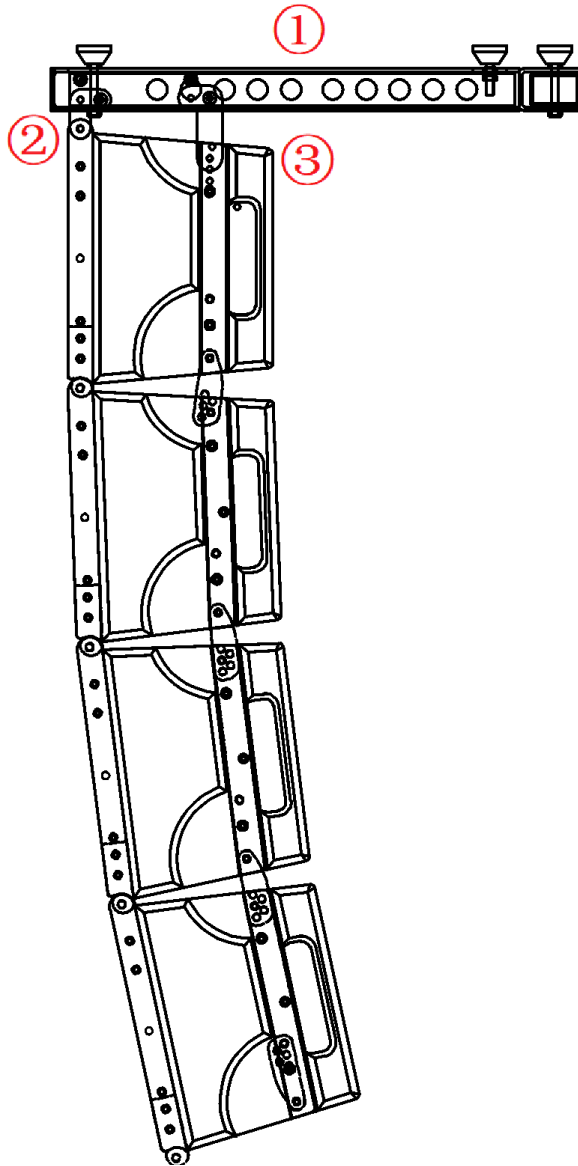
The suspension or 'flying' of cabinets should be performed only by properly qualified persons, in compliance with all local laws and using approved hardware. It is the installer's responsibility to ensure that the point of fixation is structurally adequate to support the weight of the system. The rigging or suspended mounting of these speakers can expose members of the public to serious health risks or even death.

Under no circumstances attempt to rig, suspend or otherwise mount this system unless you are fully qualified and certified to do so by relevant local, state and national authorities. All relevant safety regulations must be followed. If you are not properly qualified or do not know of pertinent regulations, consult qualified personnel for advice and assistance. Secondary safety tethers should be used

For safety, it is strongly recommended that the audio connections, mechanical fixing and mounting bracket are checked periodically.

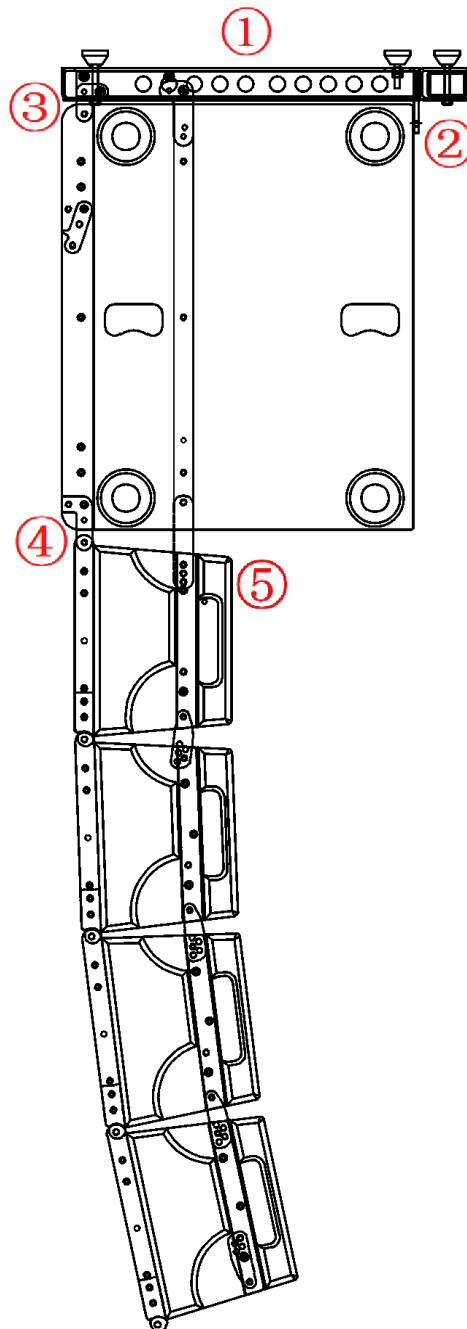
Example 1: MP42 Standalone Mounting

1. Place the MINI POWER-FLB bracket bottom-up and extend the four connecting tabs downward.
2. With the MP42 cabinet also facing up, align the four connecting tabs on the bracket, align the holes, and finally install the pins.
3. The MP42 cabinet can be tilted using additional pin slots on the rear to achieve even coverage.



Example 2: Hanging the MP42 with the MP2A/MP2P

1. Turn the bottom of the MINI POWER-FLB bracket upward and extend the four connecting tabs downward.
2. Turn the MP2A/MP2P cabinet upward as well and extend the rear connecting tab upward.
3. Align the MINI POWER-FLB bracket and the MP2A/MP2P cabinet with the bracket's four connecting tabs, align them, and then install the pins.
4. Extend the four connecting tabs on the top of the MP2A/MP2P cabinet downward. Turn the bottom of the MP42 cabinet upward and align it with the four connecting tabs on the MP2A/MP2P cabinet. Align the holes, then install the pins.
5. The MP42 cabinet can be tilted using the additional pin slots on the rear to achieve even coverage.



GROUND STACKING:

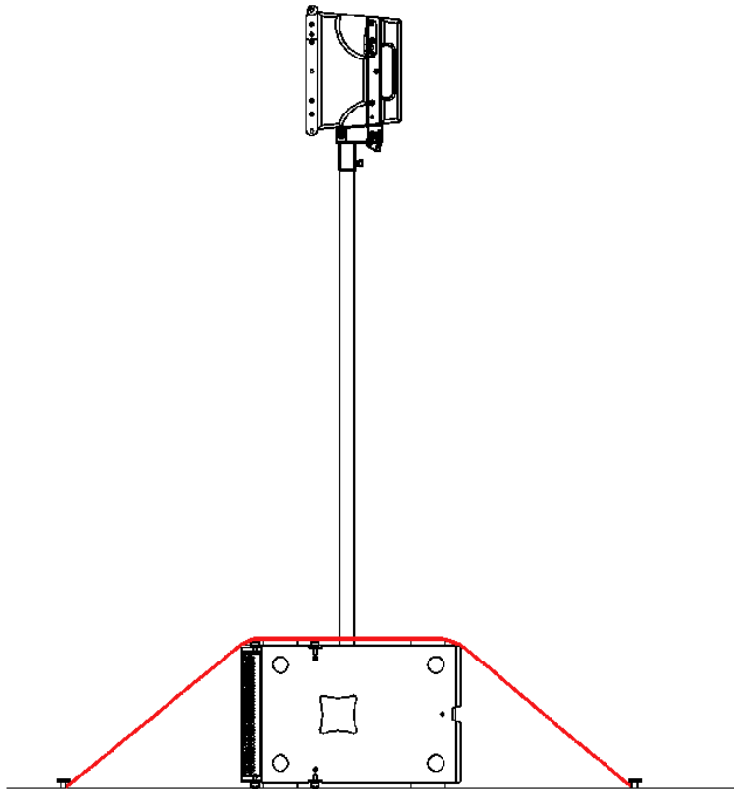
Stability and Securing of Ground-Stacked Line Arrays

To ensure stability, ground stacking assemblies must be secured to the ground or to counterweights with straps.

When ground-stacking this loudspeaker system, the assembly may reach a significant height. A tall stack has a higher centre of gravity and may become unstable if not correctly secured. To ensure safe use and compliance with local regulations:

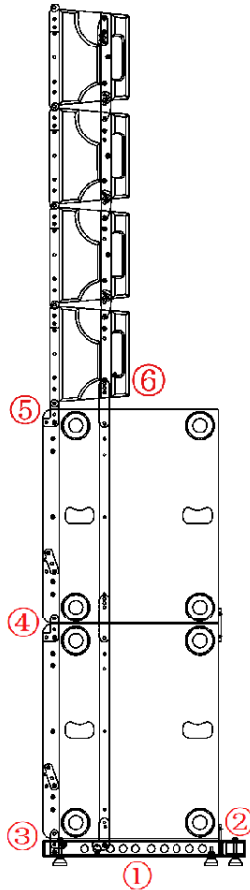
- Always set up ground-stacked arrays on a flat, level, and load-bearing surface.
- Never exceed the maximum recommended number of enclosures for ground-stacking as stated in this manual.
- The stack must be stabilised against accidental tipping. The system shall be strapped, clamped, or otherwise mechanically secured to the floor or stage structure using appropriate rated fixtures.
- The securing method must be strong enough to resist lateral forces caused by accidental impact or vibration.
- Do not rely solely on the weight of the system for stability.
- Regularly inspect straps, clamps, and securing hardware for wear or damage and replace as necessary.

Failure to secure the system as described may result in tipping, leading to serious injury or damage to equipment.

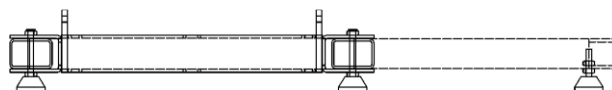


Example 1: 4 MP42s and 2 MP2A/MP2Ps for floor-mounted use.

1. Extend the four legs of the MINI POWER-FLB bracket and then extend the four connecting tabs upward.
2. With the MP2A/MP2P cabinet facing downward, extend the rear connecting tab downward.
3. Align the four connecting tabs of the MINI POWER-FLB bracket and the MP2A/MP2P cabinet with each other, then align them. Align the holes and install the pins.
4. Extend the four connecting tabs on the top of the first MP2A/MP2P cabinet upward. With the second MP2A/MP2P cabinet facing downward, align the four connecting tabs with the first MP2A/MP2P cabinet. Align the holes and install the pins. Then, align the holes and install the pins. Extend the rear connecting piece downward, align it with the holes, and install the pin.
5. Extend the four connecting pieces on the top of the MP2A/MP2P cabinet upward, with the bottom of the MP42 cabinet facing downward. Align them with the four connecting pieces on the MP2A/MP2P cabinet, align the holes, and install the pin.
6. The MP42 cabinet can be tilted using the additional pin slots on the rear to achieve even coverage.

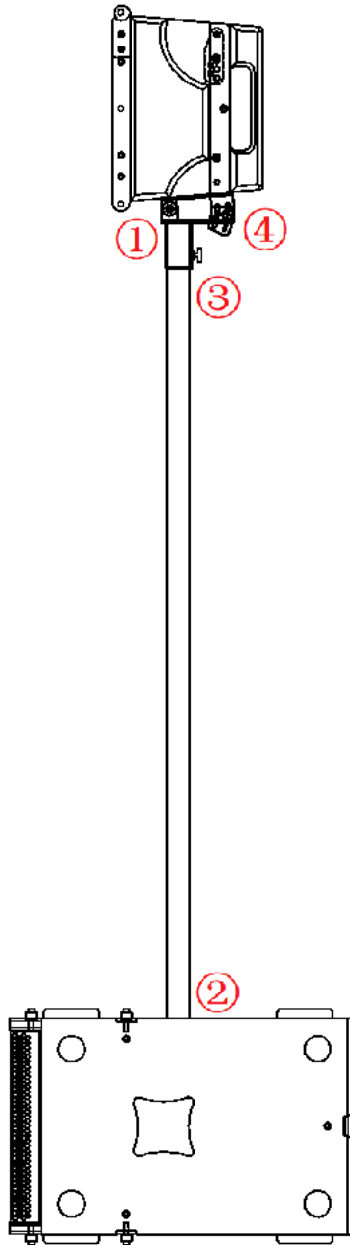


Bracket includes extendable legs for ground support:



Example 2: Two MP42s and one MP2A/MP2P combined for floor-standing use.

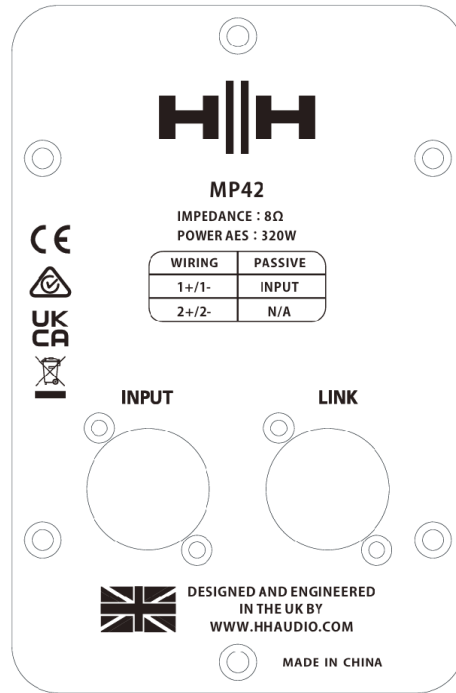
1. Install the MINI POWER-Q1 accessory at the bottom of the MP42 cabinet.
2. Turn the MP2A/MP2P cabinet sideways and insert a 35mm speaker support pole into the support bracket on the side of the MP2A/MP2P cabinet.
3. Place the MP42 and MINI POWER-Q1 combination onto the top of the speaker support pole.
4. Tighten the screws on the bottom of the MINI POWER-Q1. The MP42 cabinet can be tilted from behind the MINI POWER-Q1 accessory to achieve the desired coverage angle.





USER GUIDE

MP42 / MP2P REAR PANEL



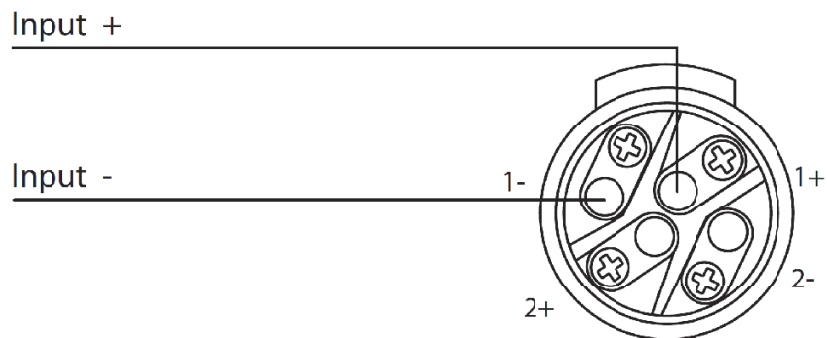
INPUT

Connects to the output of your chosen amplifier. Check the amplifier's specifications to ensure its drive capability and output power are suitable.

LINK

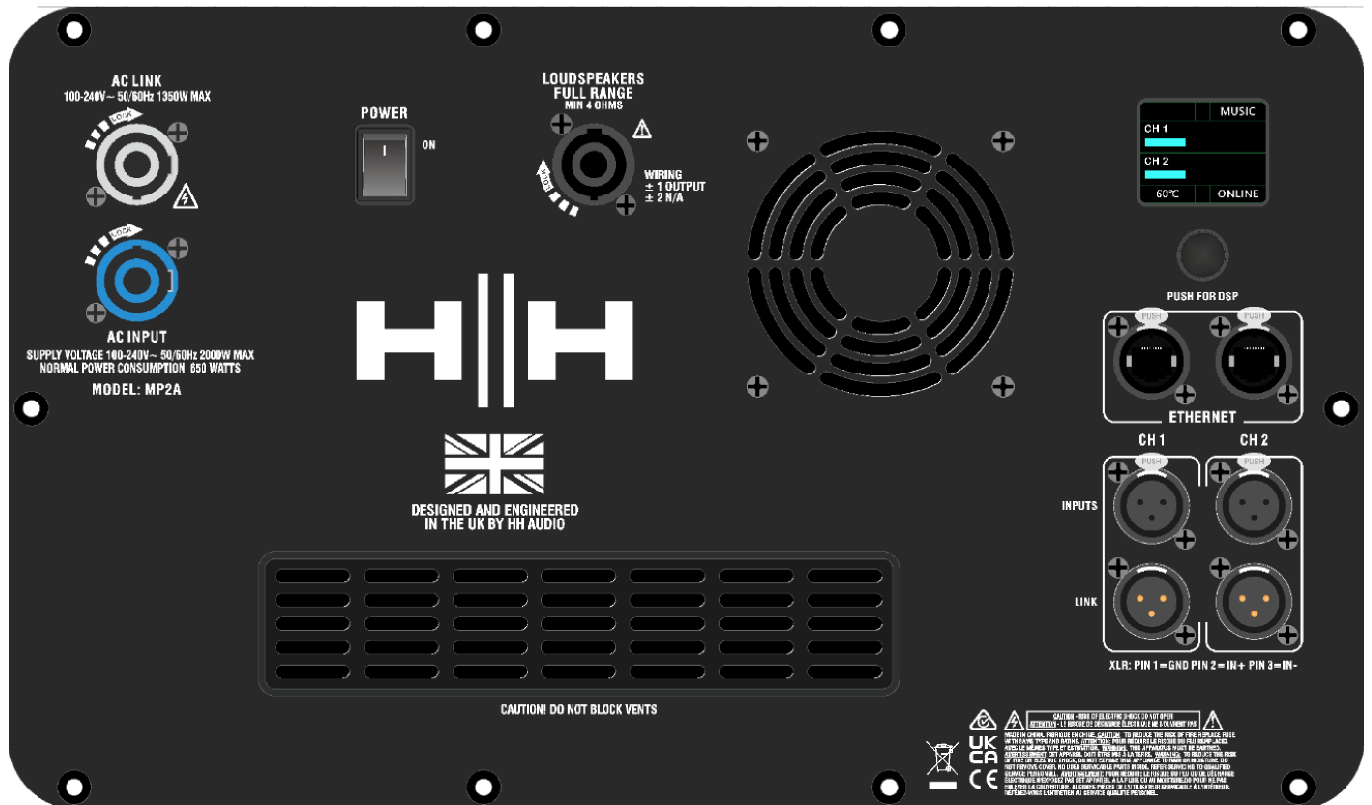
Connects in parallel with the INPUT connector, allowing additional cabinets to be added to the speaker chain.

speakON® wiring:





MP2A REAR PANEL



POWER

AC INPUT: Connect the included power cable here. The MP2A includes a universal AC 100-240V~ 50/60Hz power supply and can be used worldwide without adjustment.

AC LINK: AC power output, linked directly from the AC Input to connect to the next MP2A AC input if required. Note: Up to 2 additional MP2A units may be powered in series from this connector.

POWER: Set to ON to start the system.

FAN: To provide onboard cooling for reliable operation. Do not block the vents under any circumstances!

LOUDSPEAKERS FULL RANGE: Connects to the first full-range speaker (MP42)

CH 1/CH 2: XLR INPUTS - Balanced inputs for improved noise rejection

CH 1/CH 2 XLR LINK OUTPUTS - for signal daisy-chaining.

DISPLAY: The main page displays the channel meters, the unit operating temperature, and the currently selected presets.

ROTARY CONTROL: Single rotary encoder for navigating menus and selecting presets. A single click enters the menu and selects the currently highlighted parameter. Rotate the knob to scroll through menus.



SYSTEM CONFIGURATION & MODE SELECTION:

The MP42 system supports a range of signal routing and amplification configurations to accommodate various venue sizes and coverage needs.

AVAILABLE MODE CONFIGURATIONS:

Mode	Description	Drives
1	Channel A: Full range + Sub	MP42 x2 + MP2A
2	Channel A: Full range / Channel B: Sub	MP42 x2 + MP2A
3	Channel A: Full range + Sub	MP42 x4 + MP2A x2
4	Channel A: Full range / Channel B: Sub	MP42 x4 + MP2A x2
5	Channel A: Full range + Sub	MP42 x8 + MP2A x4
6	Channel A: Full range / Channel B: Sub	MP42 x8 + MP2A x4

PRESET MODES:

Preset	Description
1	Short throw
2	Short throw (A+B)
3	Medium throw
4	Medium throw (A+B)
5	Long throw
6	Long throw (A+B)



SPECIFICATIONS

MP42

System type	2-way Line Array Loudspeaker
Frequency Response	88Hz - 20kHz(±3dB)
	60Hz - 20kHz(-10dB)
Horizontal Coverage Angle	100°
Vertical Coverage Angle	10°
Power Rating	320W Continuous, 1280W Peak
Maximum SPL	125dB Continuous, 131dB Peak
Sensitivity	100dB(1W@1m)
Nominal Impedance	8 Ohms
Speaker	
LF Driver	4 x 5" low-frequency driver
HF Driver	2 x 1.75" high-frequency compression driver
Drive mode	Two-way PASSIVE
Enclosure	
Cabinet	Robust all-wood construction
Finish	Hard-wearing black paint
Grille	Hexagonal mesh perforated steel with acoustic foam backing.
Fittings	2 x Rear handles, rigging system, provision for pole-mount socket.
Mounting Points	M6 side mounting for integrated brackets
Mounting Bracket	MINI POWER-FLB for suspended mounting
Rigging	4-point rigging system, splay angle adjustments from 0° to 10°
Connect	
Connectors	2 x speakON NL4
Pin Connections (Input)	1+/-



MP2P

System type	Dual 12" Passive Subwoofer
Frequency Response	38Hz - 300Hz(±3dB)
	30Hz - 350Hz(-10dB)
Power Rating	800W Continuous, 3200W Peak
Maximum SPL	131dB Continuous, 137dB Peak
Sensitivity	102dB(1W@1m)
Nominal Impedance	4Ω
Speaker	
LF Driver	2 x 12" low-frequency driver
Enclosure	
Cabinet	Plywood
Finish	Hard-wearing black paint
Grille	Hexagonal mesh perforated steel with acoustic foam backing.
Fittings	4 x Side handles, 1 x Top handle, 1 x Bottom handle, Rigging system, Pole-mount socket, Provision for castors
Mounting Bracket	MINI POWER-FLB for suspended mounting
Rigging	5-point rigging system
Accessories	Dolly, Flight case, Cover, Castors
Connect	
Connectors	2 x speakON NL4
Pin Connections (Input)	1+/-
Pin Connections (Link)	1+/- and 2+/-
Dimensions (H/W/D)	670 x 350 x 550mm
Weight	41kg

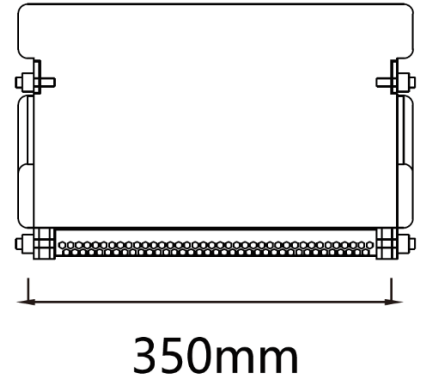
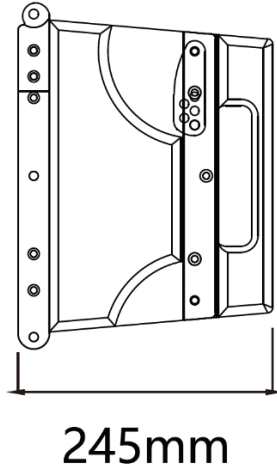
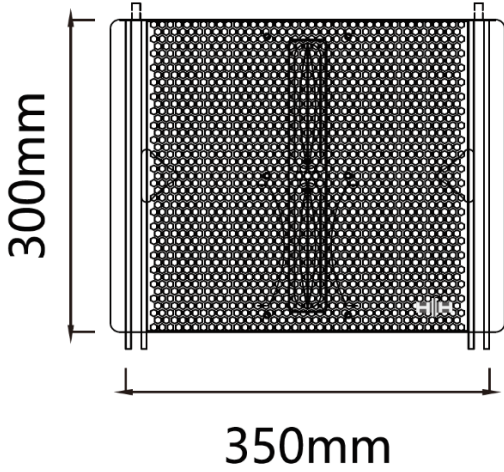


MP2A

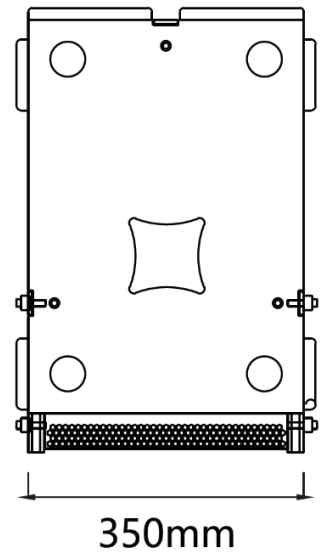
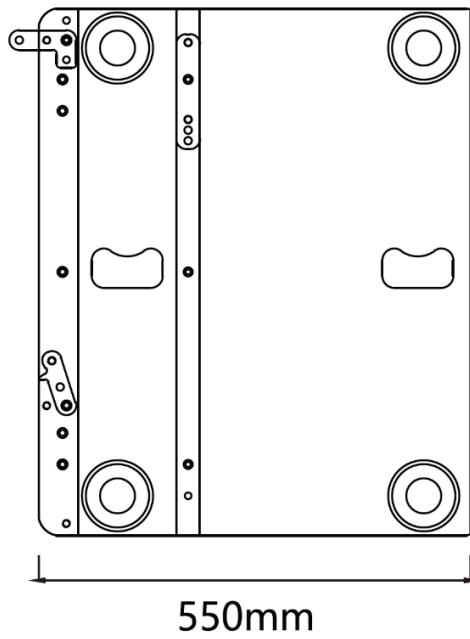
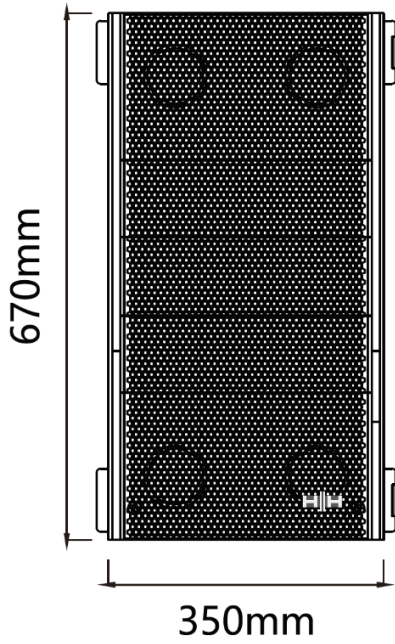
Model	MP2A
System type	Dual 12" Active Powered Subwoofer
Frequency Response	45Hz - 300Hz(± 3 dB) 30Hz - 350Hz(-10dB)
Maximum SPL	131dB Continuous, 137dB Peak
Total System Amplifier Power Rating	3600W RMS.
Speaker	
LF Driver	2 x 12" low-frequency driver
Amplifier	
THD+N	<0.2%
Frequency Response	10Hz - 20kHz(± 1 dB)
Input impedance	20k/10k
Signal-to-noise ratio	>100dB
Crosstalk	>70dB
Damping factor	>300
Subwoofer Amplifier Power Rating	1200W/8 Ω RMS, 1800W/4 Ω RMS
Satellite Amplifier Power Rating	1200W/8 Ω RMS, 1800W/4 Ω RMS
Output Stage	Class D
Safety	Short circuit, Overheating, Overload
Amplifier Gain	35dB
DSP	32-bit DSP processor with 48kHz/24-bit AD/DA conversion
AC Power	100-240 VAC, 50/60 Hz.
Enclosure	
Cabinet	Acoustically optimised plywood cabinet with extensive internal bracing to eliminate vibrational modes
Finish	Hard wearing black paint
Grille	Black perforated steel, Hexagonal mesh, acoustic foam lined
Fittings	4 x Side handles, 1 x Top handles, 1 x Bottom handles, Rigging system, Pole-mount socket, Provision for castors
Mounting Bracket	MINIPOWER-FLB - Flying bracket and ground support frame. MINIPOWER-Q1 - Pole mount adaptor.
Rigging	5-point rigging system
Connections	
Connectors	2 x XLR Input, 2 x XLR Link Output, powerCON® power input, powerCON power Link Output, USB, RS485, 1 x speakON® NL4(Power output)
speakON Pin Connections (Output)	1 +/-
Dimensions (H/W/D)	670 x 350 x 550mm
Weight	41kg



DIMENSIONS
MP42



MP2P / MP2A






SAFETY AND WARNINGS

To take full advantage of your new product and enjoy long and trouble-free performance, please read this owner's manual carefully, and keep it in a safe place for future reference.

MANUFACTURER: HH AUDIO. STEELPARK ROAD, COOMBS WOOD
BUSINESS PARK WEST, HALESOWEN, B62 8HD, UK

- 1) Unpacking: On unpacking your product, please check carefully for any signs of damage that may have occurred whilst in transit from the HH factory to your dealer. In the unlikely event that there has been damage, please re-pack your unit in its original carton and consult your dealer. We strongly advise you to keep your original transit carton, since in the unlikely event that your unit should develop a fault, you will be able to return it to you dealer for rectification securely packed.
- 2) Amplifier Connection: To avoid damage, generally it is advisable to establish and follow a pattern for turning on and off your system. With all system parts connected, turn on source equipment, mixers, effects processors etc, BEFORE turning on your amplifier. Many products have large transient surges at turn on and off which can cause damage to your speakers. By turning on your amplifier LAST and making sure its level control is set to a minimum, any transients from other equipment should not reach your loudspeakers. Wait till all system parts have stabilised, usually a couple of seconds. Similarly, when turning off your system always turn down the level controls on your amplifier and then turn off its power before turning off other equipment.
- 3) Cables: Never use shielded or microphone cable for any speaker connections as this will not be substantial enough to handle the amplifier load and could cause damage to your complete system. Use good quality shielded cables everywhere else.
- 4) Servicing: The user should not attempt to service these products. Refer all servicing to qualified service personnel.
- 5) Heed all warnings.
- 6) Follow all instructions.
- 7) Do not use this apparatus near water.
- 8) Clean only with a dry cloth.
- 9) Do not block any of the ventilation openings. Install in accordance with manufacturer's instructions.
- 10) Do not install near any heat sources such as radiators, heat registers, stoves, or other apparatus (including amplifiers) that produce heat.
- 11) MP2A Only: This amplifier must be earthed (grounded). Always connect to a mains socket outlet with a protective earthing (grounding) connection. Do not remove or defeat the safety earth (ground). An apparatus with Class I construction shall be connected to a mains socket outlet with a protective connection. Do not defeat the safety purpose of the polarized or grounding-type plug. A polarized plug has two blades with one wider than the other. A grounding type plug has two blades and a third grounding prong. The wide blade or third prong is provided for your safety. If the provided plug does not fit into your outlet, consult an electrician for replacement of the obsolete outlet.
- 12) Protect the power cord from being walked on or pinched, particularly at plugs, convenience receptacles, and the point they exit from the apparatus.
- 13) Only use attachments/accessories provided by the manufacturer.
- 14) Use only with a cart, stand, tripod, bracket, or table specified by the manufacturer, or sold with the apparatus. When a cart is used, use caution when moving the cart/apparatus combination to avoid injury from tip-over.
- 15) The mains plug or appliance coupler is used as the disconnect device and shall remain readily operable. The user should allow easy access to any mains plug, mains coupler and mains switch used in conjunction with this unit thus making it readily operable. Unplug this apparatus during lightning storms or when unused for long periods of time.
- 16) Refer all servicing to qualified service personnel. Servicing is required when the apparatus has been damaged in any way, such as when power-supply cord or plug is damaged, liquid has been spilled or objects have fallen into the apparatus, the apparatus has been exposed to rain or moisture, does not operate normally, or has been dropped.
- 17) Never break off the ground pin. Connect only to a power supply of the type marked on the unit adjacent to the power supply cord.
- 18) If this product is to be mounted in an equipment rack, rear support should be provided.
- 19) Note for UK only: If the colours of the wires in the mains lead of this unit do not correspond with the terminals in your plug, proceed as follows:
 - o The wire that is coloured green and yellow must be connected to the terminal that is marked by the letter E, the earth symbol, coloured green or coloured green and yellow.
 - o The wire that is coloured blue must be connected to the terminal that is marked with the letter N or the colour black.
 - o The wire that is coloured brown must be connected to the terminal that is marked with the letter L or the colour red.
- 20) This electrical apparatus should not be exposed to dripping or splashing and care should be taken not to place objects containing liquids, such as vases, upon the apparatus.
- 21) Exposure to extremely high noise levels may cause a permanent hearing loss. Individuals vary considerably in susceptibility to noise-induced hearing loss, but nearly everyone will lose some hearing if exposed to sufficiently intense noise for a sufficient time. The U.S. Government's Occupational Safety and Health Administration (OSHA) has specified the following permissible noise level exposures: According to OSHA, any exposure more than the above permissible limits could result in some hearing loss. Earplugs or protectors to the ear canals or over the ears must be worn when operating this amplification system to prevent a permanent hearing loss, if exposure is more than the limits as set forth above. To ensure against potentially dangerous exposure to high sound pressure levels, it is recommended that all persons exposed to equipment capable of producing high sound pressure levels such as this amplification system be protected by hearing protectors while this unit is in operation.

Duration Per Day in Hours	Sound Level dBA, slow response
8	90
6	92
4	95
3	97
2	100
1 ½	102
1	105
½	110
¼ ou inférieur	115
- 22) If your appliance features a tilting mechanism or a kickback style cabinet, please use this design feature with caution. Due to the ease with which the amplifier can be moved between straight and tilted back positions, only use the amplifier on a level, stable surface. DO NOT operate the amplifier on a desk, table, shelf or otherwise unsuitable non-stable platform.
- 23) Symbols & nomenclature used on the product and in the product manuals, intended to alert the operator to areas where extra caution may be necessary, are as follows:

 CAUTION:	<p>Intended to alert the user to the presence of uninsulated 'Dangerous Voltage' within the products enclosure that may be sufficient to constitute a risk of electrical shock to persons.</p> <p>Ce symbole est utilisé pur indiquer a l'utilisateur de ce produit de tension non-isolée dangereuse pouvant être d'intensité suffisante pour constituer un risque de choc électrique.</p> <p>Este símbolo tiene el propósito de alertar al usuario de la presencia de '(voltaje) peligroso' que no tiene aislamiento dentro de la caja del producto que puede tener una magnitud suficiente como para constituir riesgo de corrientazo.</p> <p>Dieses Symbol soll den Anwender vor unisolierten gefährlichen Spannungen innerhalb des Gehäuses warnen, die von ausreichender Stärke sind, um einen elektrischen Schlag verursachen zu können.</p>
 WARNING:	<p>Intended to alert the user of the presence of important operating and maintenance (Servicing) instructions in the literature accompanying the product.</p> <p>Destiné à alerter l'utilisateur de la présence d'instructions importantes d'exploitation et de maintenance (entretien) dans la documentation accompagnant le produit.</p> <p>Este símbolo tiene el propósito de la alertar al usuario de las presencias de instrucciones importantes sobre la operación y mantenimiento en la literatura que viene con el producto.</p> <p>Dieses Symbol soll den Benutzer auf wichtige Instruktionen in der Bedienungsanleitung aufmerksam machen, die Handhabung und Wartung des Produkts betreffen.</p>
<p>CAUTION:</p> <p>ATTENTION :</p> <p>PRECAUCION:</p> <p>VORSICHT:</p>	<p>Risk of electrical shock - DO NOT OPEN. To reduce the risk of electrical shock, do not remove the cover. No user serviceable parts inside. Refer servicing to qualified personnel.</p> <p>Risques de choc électrique - NE PAS OUVIRIR. Afin de réduire le risque de choc électrique, ne pas enlever le couvercle. Il ne se trouve a l'intérieur aucune pièce pouvant être réparée par l'utilisateur. Confier l'entretien a un personnel qualifié.</p> <p>Riesgo de descarga eléctrica - NO ABRIR. Para reducir el riesgo de descarga eléctrica, no quite la cubierta. No hay piezas reparables por el usuario en el interior. Remita el servicio a personal calificado.</p> <p>Risiko - Elektrischer Schlag! Nicht offen! Um das Risiko eines elektrischen Schlages zu vermeiden, nicht die Abdeckung entfernen. Es befinden sich keine Teile darin, die vor Anwender repariert werden konnten. Reparaturen nur von qualifiziertem Fachpersonal durchführen lassen.</p>
<p>WARNING:</p> <p>ADVERTISSEMENT :</p> <p>ADVERTENCIA:</p> <p>ACHTUNG:</p>	<p>To prevent electrical shock or fire hazard, do not expose this appliance to rain or moisture. Before using this appliance, please read the operating instructions for further warnings.</p> <p>Afin de prévenir les risques de décharge électrique ou de feu, n'exposez pas cet appareil a la pluie ou a l'humidité. Avant d'utiliser cet appareil, lisez les avertissements supplantais situes dans le guide.</p> <p>Para evitar descargas eléctricas o peligro de incendio, no exponga este aparato a la lluvia ni a la humedad. Antes de usar este aparato, lea las instrucciones de funcionamiento para conocer más advertencias.</p> <p>Um einen elektrischen Schlag oder Feuergefahr zu vermeiden, sollte dieses Gerät nicht dem Regen oder Feuchtigkeit ausgesetzt werden. Vor Inbetriebnahme unbedingt die Bedienungsanleitung lesen.</p>
	<p>This device complies with Part 15 of the FCC rules Operation is subject to the following two conditions:</p> <ol style="list-style-type: none"> 1) This device may not cause harmful interference. 2) This device must accept any interference received, that may cause undesired operation. <p>Warning: Changes or modification to the equipment not approved by HH can void the user's authority to use the equipment.</p> <p>Note: This equipment has been tested and found to comply with the limits for Class B digital device, pursuant to Part 15 of the FCC Rules. These limits are designed to provide reasonable protection against harmful interference in a residential installation. This equipment generates, uses and can radiate radio frequency energy and if not installed and used in accordance with the instructions, may cause harmful interference to radio communications. However, there is no guarantee that interference will not occur in a particular installation. If this equipment does cause harmful interference to radio or television reception, which can be determined by turning the equipment off and on, the user is encouraged to try and correct the interference by one or more of the following measures. Reorient or relocate the receiving antenna. Increase the separation between the equipment and receiver. Connect the equipment into an outlet on a circuit different from that to which the receiver is connected. Consult the dealer or an experienced radio/TV technician for help.</p>
	<p>This product conforms to the requirements of the following European Regulations, Directives & Rules: CE Mark (93/68/EEC), Low Voltage (2014/35/EU), EMC (2014/30/EU), RoHS (2011/65/EU), ErP (2009/125/EU)</p> <p>SIMPLIFIED EU DECLARATION OF CONFORMITY</p> <p>Full text of the EU declaration of conformity is available at the following internet address: http://support.haudio.com/approvals</p>
	<p>The object of the declaration described above is in conformity with the relevant statutory requirement Electrical Equipment (Safety) Regulations 2016, Electromagnetic Compatibility Regulations 2016, The Restriction of the use of Certain Hazardous Substances in Electrical and Electronic Equipment Regulations 2012, The Ecodesign for Energy-Related Products and Energy Information, (Amendment) (EU Exit) Regulations 2012</p>
	<p>In order to reduce environmental damage, at the end of its useful life, this product must not be disposed of along with normal household waste to landfill sites. It must be taken to an approved recycling centre according to the recommendations of the WEEE (Waste Electrical and Electronic Equipment) directive applicable in your country.</p>

HH AUDIO
STEELPARK ROAD, COOMBSWOOD BUSINESS PARK WEST, HALESOWEN, B62 8HD
HH AUDIO PART OF HEADSTOCK GROUP
FOR THE LATEST INFORMATION PLEASE VISIT

WWW.HHAUDIO.COM

IN THE INTEREST OF CONTINUED DEVELOPMENT, HH RESERVES THE RIGHT TO AMEND PRODUCT SPECIFICATION