

TNA-2051-G3

2 x 5-inch 2-Way Passive Line Array Loudspeaker

FEATURES

- 2 x HH-Designed 5-inch LF drivers.
- 1 x Celestion CDX1-10WG compression driver.
- Celestion designed waveguide and horn flare.
- Sensitivity (1W/1m): 94dB SPL
- Power rating: 200W AES
- Nominal dispersion: 120° x 8°
- Integrated 3-point pin-based rigging system.
- Hard-wearing black paint finish.



APPLICATIONS

- Live Music
- Nightclubs
- Auditoriums
- Theatres
- Houses of Worship

DESCRIPTION

The TNA-2051-G3 is a passive line array loudspeaker comprising two 5-inch HH-designed LF drivers alongside a 1.33-inch Celestion CDX1-10WG compression driver, mounted to a Celestion designed waveguide and horn flare for optimal coverage control and clarity.

With a system power rating of 200W AES and a sensitivity of 94dB SPL (1W/1m), the TNA-2051-G3 delivers an impressive maximum SPL of 123 dB SPL (1m), ensuring precise and powerful audio throughout the carefully controlled coverage area.

Engineered for seamless integration, the TNA-2051-G3 pairs effortlessly with either the TNA-1200S-G3 passive subwoofer or the TNA-2120SA-G3 active subwoofer. The integrated 3-point pin-based rigging system simplifies set up and tear down time for TNA-G3, offering significant efficiency improvements over previous generations. Whether the system is flown or ground stacked, this mechanical upgrade minimises set-up time while expanding the range of use cases from fixed installations to small-to-medium scale touring applications.

This generation of TNA benefits from several key acoustic, mechanical, and aesthetic upgrades including:

- Acoustic optimisation to improve overall system performance.
- Simple setup and tear down via the integrated pin-based rigging system.
- Enhanced durability with an upgraded hard-wearing black paint finish.
- Improved aesthetic with an updated cabinet design.

TNA-G3 systems can be flown via the TNA-BRK1-G3 flying bracket and easily transported with the TNA-DF1-G3 dolly frame.



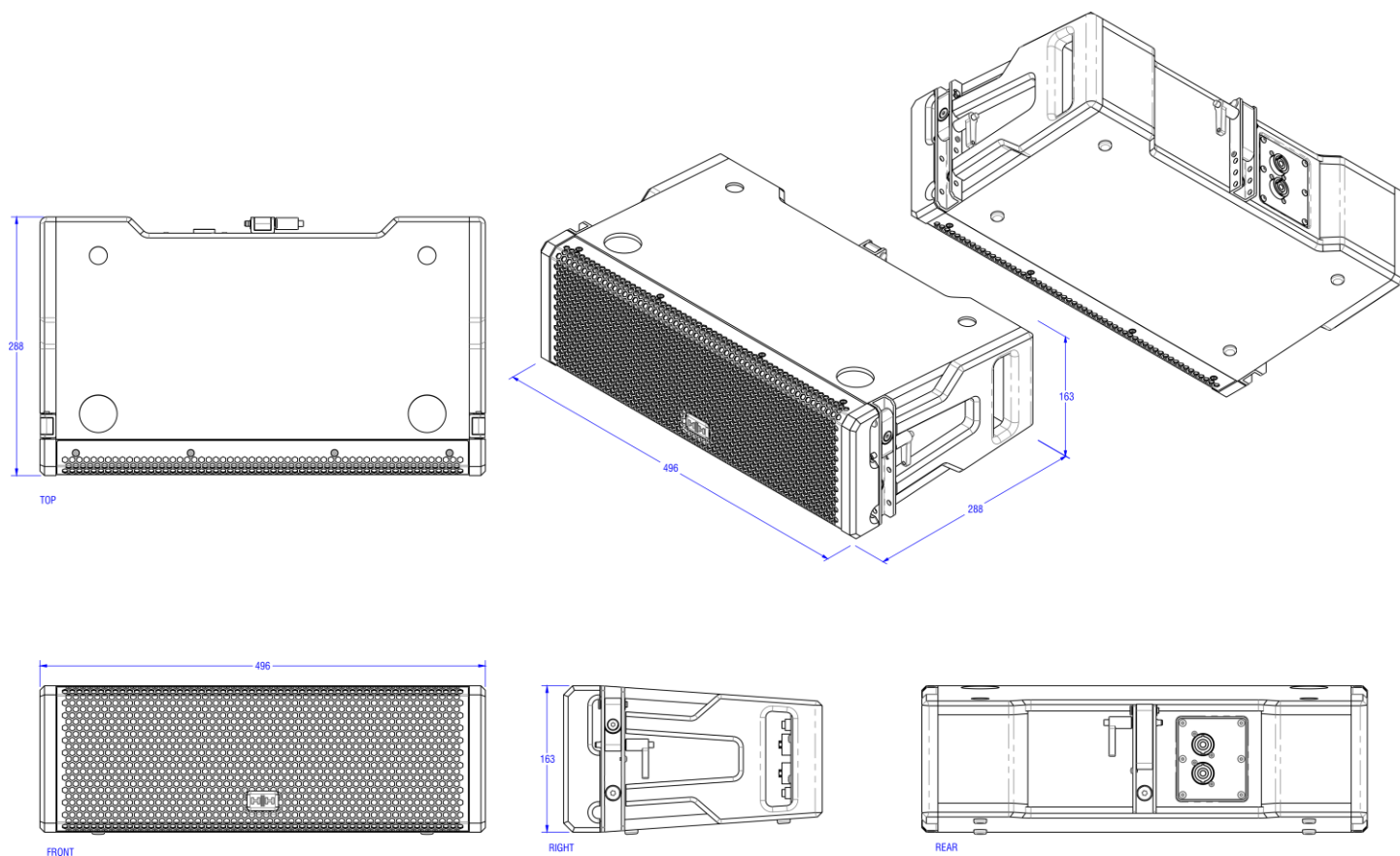
SPECIFICATIONS

Specifications	
Model	TNA-2051-G3
System type	2-way line array loudspeaker
Frequency Response	65Hz - 20KHz (-10dB) 100Hz - 18KHz (-3dB)
System Power Rating	200W AES, 800W Peak
Sensitivity (1W/1m)	94 dB SPL
Max SPL 1m	123dB SPL
System Max SPL 1m	132 dB SPL
Nominal System Impedance	16 ohms
Input Connector	NL4 ±1 Twist Lock Connector.
Link Connector	NL4 ±1 Twist Lock Connector.
Speaker	
HF Driver	1 x 1.33-inch Celestion Compression Driver, mounted to Celestion Designed waveguide and horn.
LF Driver	2 x 5-inch HH-designed driver.
Internal Crossover Frequency	2000Hz
Nominal dispersion	120° x 8° Single Box.
Recommended HPF Frequency	100Hz
Enclosure	
Cabinet	18mm Plywood.
Finish	Painted Black.
Mounting Bracket	TNA-BRK1-G3 for suspended mounting.
Mounting Points	6 x M8 mounting points for integrated rigging system.
Rigging System	3-point rigging system w/removable locking pin for linking and adjusting splay angle.
Rigging/Splay Angle Settings	0°, 4° and 8° (between enclosures).
Grille	1.5mm Thickness Steel, Hexagonal mesh, acoustic foam lined.
Unit dimensions (HWD)	163 x 496 x 288mm, 6.4" x 19.5" x 11.3"
Unit weight	9Kg, 19.8 lbs (each)
Carton dimensions (HWD)	585 x 445 x 405mm, 23" x 17.5" x 15.9"
Packed weight	21.7Kg, 47.8 lbs (2pcs per carton)
EAN Code	5060109459678 As Shipped 2 pcs

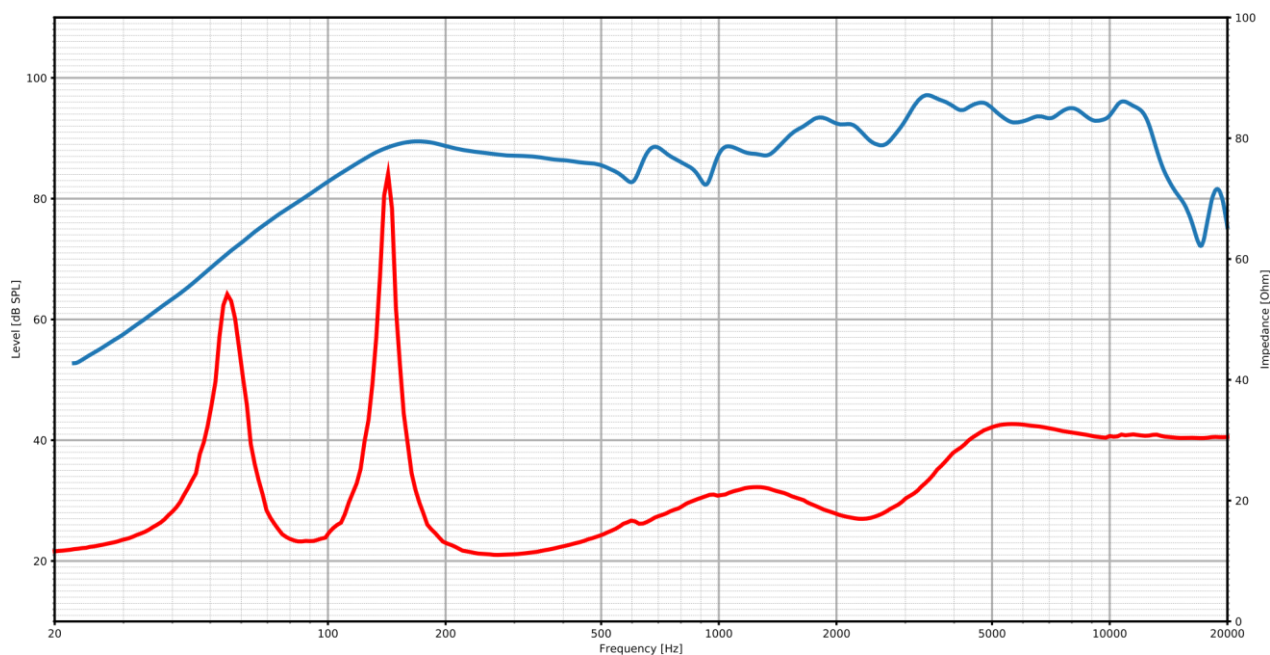
In the interest of continued development, HH reserves the right to amend product specification without prior notification.



DIMENSIONS (in mm)

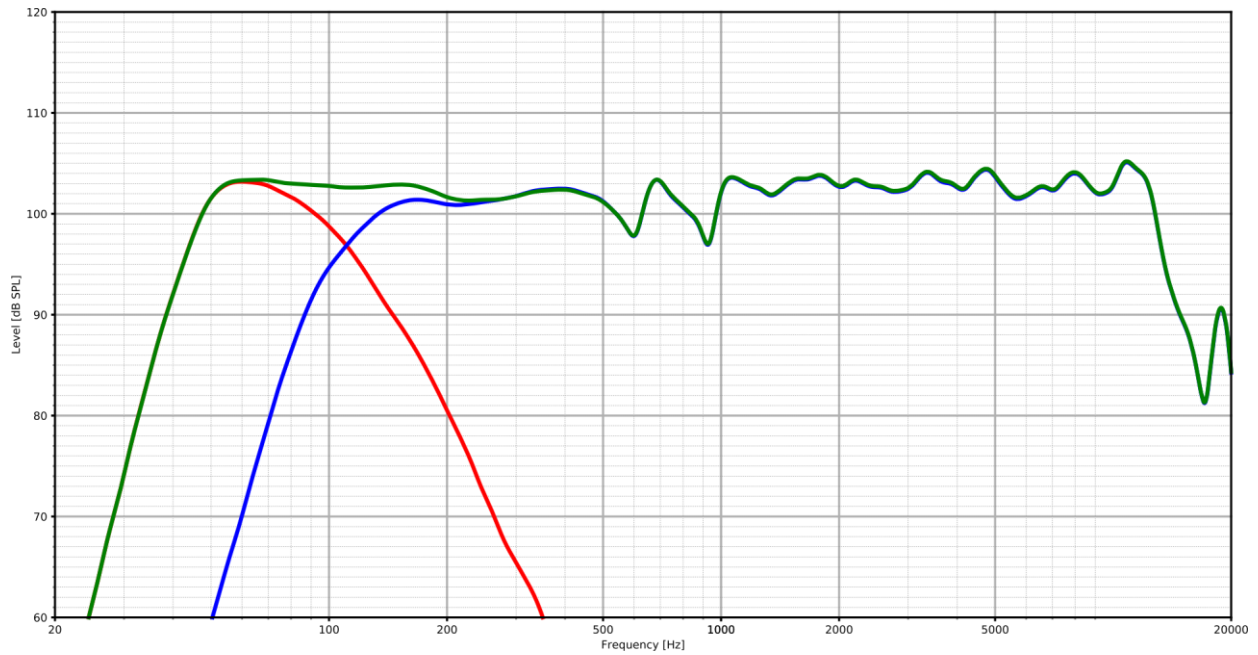


IMPEDANCE

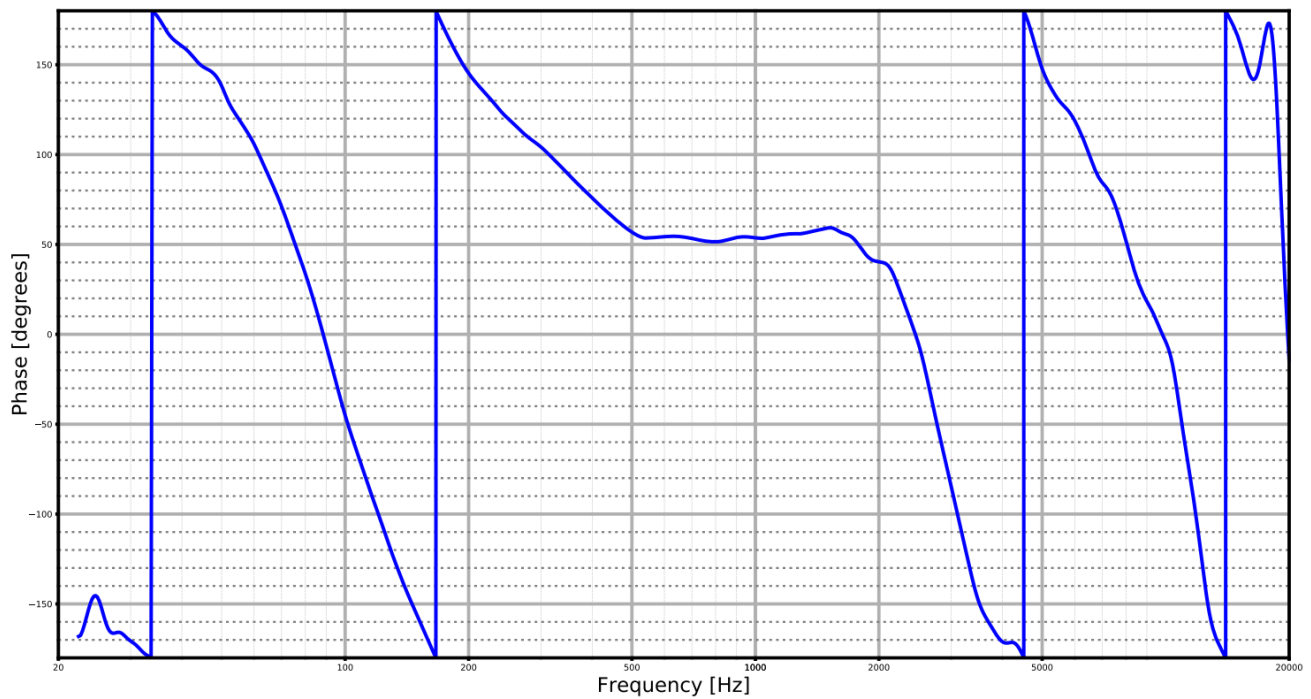


FREQUENCY RESPONSE

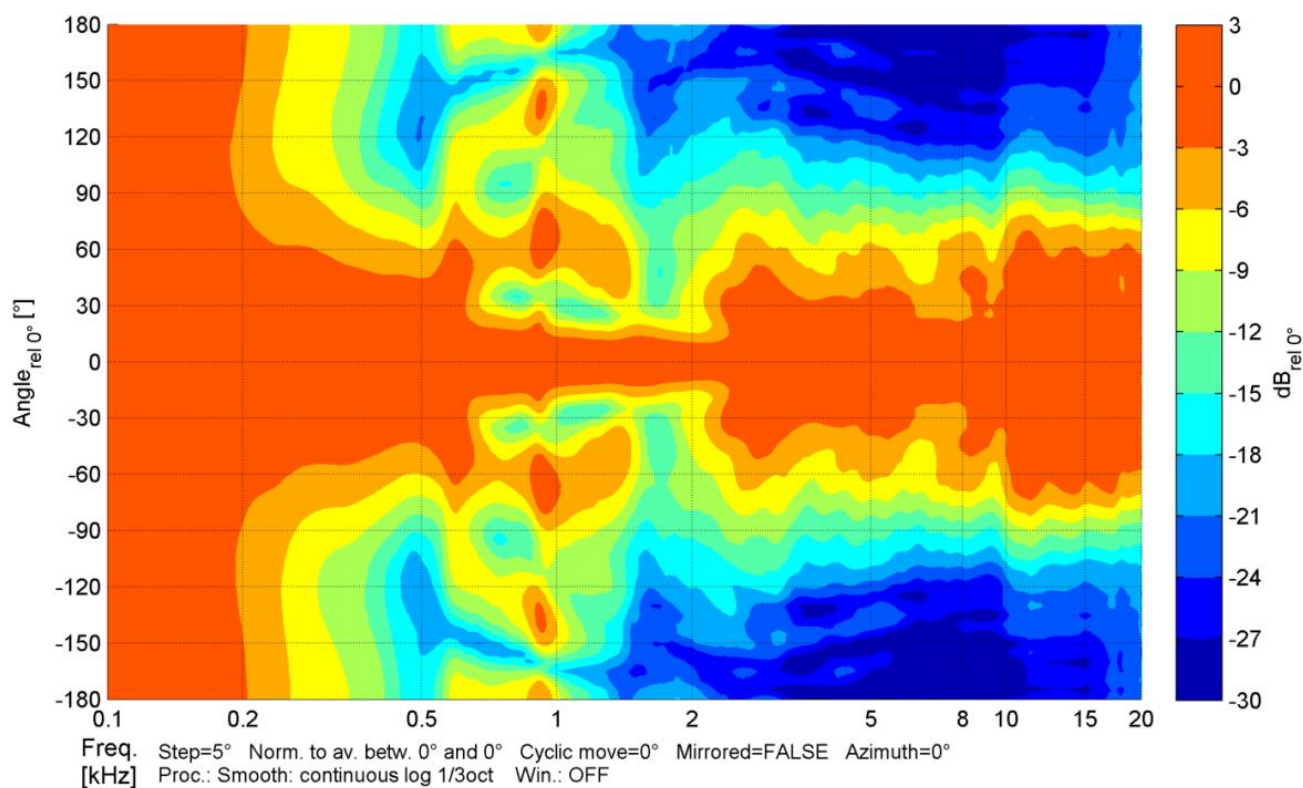
(SHOWN WITH 1X TNA-1200S-G3 AND 4X TNA-2051-G3)



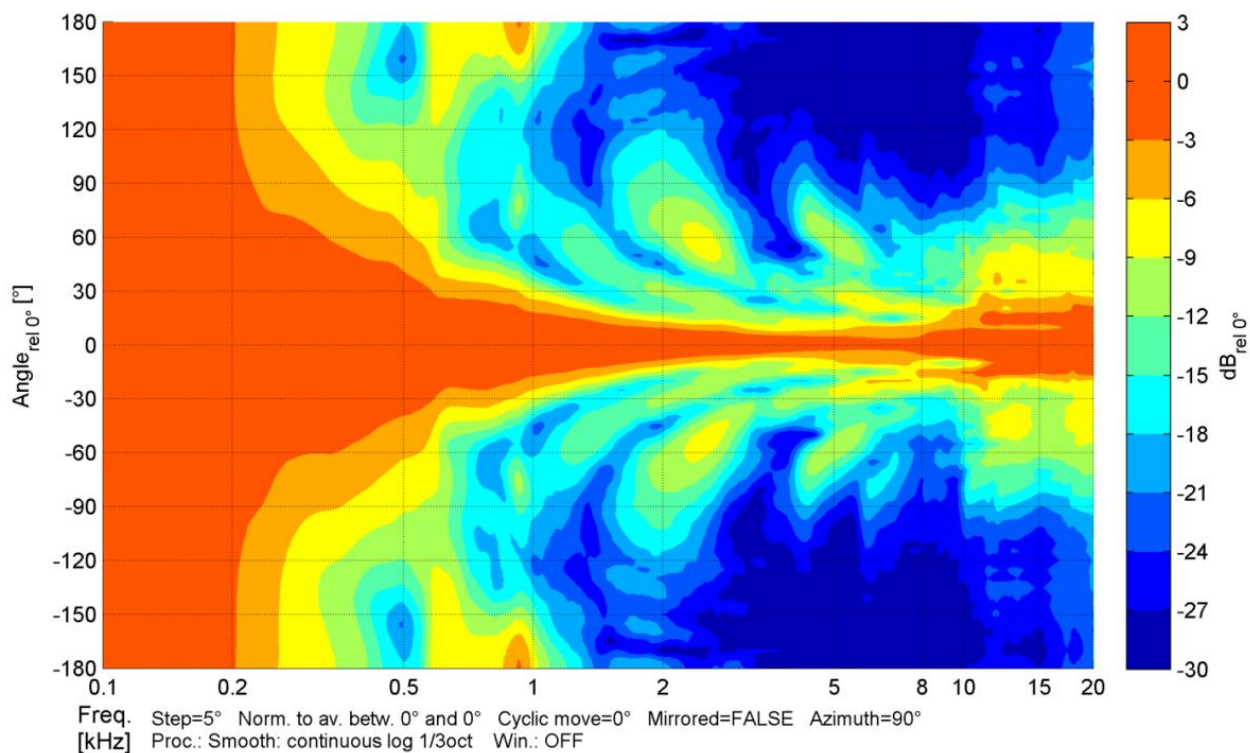
PHASE



HORIZONTAL DISPERSION



VERTICAL DISPERSION



POLAR PLOTS

